



LYMINGTON
HARBOUR

ONLY A STEP AWAY...

Beautiful Georgian Town
New Forest Activities
Fantastic Dining Experiences
Things To See & Do



HARBOUR GUIDE 2023

Facilities, Local Services & Tide Tables





FREE YOUR SPIRIT

PREMIUM SPIRITS - HAND-CRAFTED ON THE ISLE OF WIGHT

ISLEOFWIGHTDISTILLERY.COM | @MERMAIDGIN f

FREE





Wightlink Ferry
Terminal

Harbour Office,
Dan Bran and
Harbour Master's
Pontoons

Yacht Haven
Marina

Berthon Marina

Town Quay
Visitor Pontoons

LYMINGTON HARBOUR COMMISSIONERS

Harbour Office
Bath Road
Lymington
Hampshire SO41 3SE

Tel: +44 (0)1590 672014

Fax: +44 (0)1590 677939

VHF: CH66 (Office Hours)

info@lymingtonharbour.co.uk
www.lymingtonharbour.co.uk



Haven Quay
Lymington

DRY STACK • STORAGE • LIFTING

~~~~~  
WE LOOK  
FORWARD TO  
WELCOMING  
YOU IN 2023  
~~~~~



Yacht Haven's facility for **RIBS & small boats**

Is your boat under 10m? We offer the best value for small boat lifting and storage.

On-site facilities

- Dry Stack berthing for 55 boats
- Storage ashore in our yard for 160 boats
- Well-protected location for antifouling
- Boat maintenance and repair companies

Why choose us

- No minimum charge length for boatyard services
- Open site policy for contractors
- Boat lifting for scrubs, on/off road transport and general maintenance

Welcome aboard the Yacht Havens family!

**7 DAYS FREE
STORAGE ASHORE
when we ANTIFOUL
your boat!**
Ask for a quote.

YACHTHAVENS.COM
01590 677072

CONTENTS



Welcome 4-5



Getting Here 6-9



Safety 11 15



Harbour Facilities 17-23



Dues & Charges 25



Visitor Offers 27



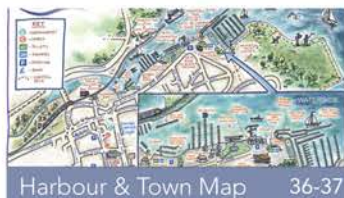
Things To See & Do 29-31



Getting Around 33



Eat & Shop 35



Harbour & Town Map 36-37



Environment 39-41



Harbour Advisory Group 43



Where To Next? 44



Useful Contacts 45



2022 Photo Competition 47

LYMINGTON (1ST HW)

Time Zone: UTC/GMT+00:00

Lat 50°41' N Long 1°32' W

January		February		March	
Time	Height	Time	Height	Time	Height
1	0.0	1	0.0	1	0.0
2	0.1	2	0.1	2	0.1
3	0.2	3	0.2	3	0.2
4	0.3	4	0.3	4	0.3
5	0.4	5	0.4	5	0.4
6	0.5	6	0.5	6	0.5
7	0.6	7	0.6	7	0.6
8	0.7	8	0.7	8	0.7
9	0.8	9	0.8	9	0.8
10	0.9	10	0.9	10	0.9
11	1.0	11	1.0	11	1.0
12	1.1	12	1.1	12	1.1
13	1.2	13	1.2	13	1.2
14	1.3	14	1.3	14	1.3
15	1.4	15	1.4	15	1.4
16	1.5	16	1.5	16	1.5
17	1.6	17	1.6	17	1.6
18	1.7	18	1.7	18	1.7
19	1.8	19	1.8	19	1.8
20	1.9	20	1.9	20	1.9
21	2.0	21	2.0	21	2.0
22	2.1	22	2.1	22	2.1
23	2.2	23	2.2	23	2.2
24	2.3	24	2.3	24	2.3
25	2.4	25	2.4	25	2.4
26	2.5	26	2.5	26	2.5
27	2.6	27	2.6	27	2.6
28	2.7	28	2.7	28	2.7
29	2.8	29	2.8	29	2.8
30	2.9	30	2.9	30	2.9
31	3.0	31	3.0	31	3.0

Tide Tables 49-55

To aid navigation of this guide, please refer to the colour-coded bars to the right of each page and match with the coloured sections shown on the images above.

WELCOME TO LYMINGTON HARBOUR...



Ryan Willegers
Harbour Master & Chief Executive

"I would like to extend a very warm welcome on behalf of Lymington Harbour and the town.

Lymington River and its approaches offer a safe haven for visiting yachtsmen in a beautiful location. Nestled between the 500 acre Lymington to Keyhaven nature reserve and the Georgian market town of Lymington, there is something for everyone.

The historic High Street is just a short stroll from the harbour and full of interesting shops, designer boutiques, pubs, cafes, restaurants and accommodation. The Saturday market, dating back to the 13th century is popular throughout the year.

The New Forest National Park, with its beautiful ancient woodlands and heathlands, is practically on our doorstep, and offers miles of unspoilt walking trails, cycle ways and classic English villages to explore and enjoy.

We pride ourselves on offering a warm and friendly welcome to all. If you require any assistance, please do not hesitate to ask."

Roy Froud's 2022 Winning Photo
(see Page 49 for some of the other entries)





Je tiens à vous souhaiter très chaleureusement la bienvenue au nom du port de Lymington et de toute la ville. La rivière Lymington et ses alentours offrent un refuge pour les plaisanciers au sein d'un lieu magnifique. Niché entre les 200 hectares de la réserve naturelle de Lymington à Keyhaven et le bourg de Lymington, le port offre de quoi combler les goûts de chacun.

La grande rue historique se situe à quelques minutes à pied du port et propose de nombreux magasins, boutiques de créateurs, bars, cafés, restaurants et hébergements. Le marché du samedi, datant du 13e siècle, est très fréquenté tout au long de l'année.

Le parc national New Forest, avec ses magnifiques bois et bruyères anciens, se trouve pratiquement au pas de notre porte, et offre des kilomètres de sentiers pédestres et de pistes cyclables préservés ainsi que des villages anglais typiques à explorer et à apprécier.

Nous sommes fiers d'offrir à tous un accueil chaleureux. N'hésitez pas à nous solliciter si vous avez besoin d'aide.

Ryan Willegers / Maître de Port & Directeur Général



Im Namen des Lymington-Hafens und der gesamten Stadt möchte ich Sie bei uns ganz herzlich begrüßen. Lymington River und seine Nebenflüsse bieten einen Zufluchtsort für reisende Segler in einer herrlichen Umgebung. Gelegen zwischen dem Naturschutzgebiet auf den 500 Morgen Lymington bis Keyhaven und der georgischen Marktstadt Lymington, kommt hier jeder auf seine Kosten.

Die historische Hauptstraße ist nur einen kurzen Spaziergang vom Hafen entfernt und voll von interessanten Geschäften, Designerboutiquen, Kneipen, Cafés, Restaurants und Hotels. Der aus dem 13. Jahrhundert stammende Samstagmarkt ist das ganze Jahr über beliebt.

Der New Forest Naturschutzpark mit seinem herrlichen Wald- und Heidegebiet ist praktisch vor der Haustür und bietet ganze Kilometer unverdorbener Wander- und Radwege und klassisch englischer Dörfer, die Sie frei erforschen und genießen können.

Bei uns ist jeder herzlichst willkommen. Falls Sie Hilfe brauchen, stehen wir Ihnen jederzeit gerne zur Verfügung!

Ryan Willegers / Hafenmeister und Geschäftsführer



Ik wil u verder hartelijk welkom heten in naam van Lymington Harbour en de stad. Lymington River en haar manier van aanpak biedt een veilige haven voor bezoekende watersporters op een prachtige locatie. Genesteld tussen de 500 acres natuurgebied van Lymington tot Keyhaven en de Georgische marktstad van Lymington, er is voor iedereen iets.

De historische High Street ligt op korte loopafstand van de haven en er zijn vele interessante winkels, designer boutiques, pubs, cafés, restaurants en accommodaties. De zaterdagmarkt, die teruggaat tot de 13de eeuw, is het hele jaar door populair.

Het New Forest National Park, met zijn prachtige oude bos- en heidelandchap, ligt praktisch voor de deur en biedt kilometers ongerepte wandelpaden, fietspaden en klassieke Engelse dorpjes om te verkennen en te genieten.

We zijn er trots op dat we een warm en vriendelijk welkom bieden aan iedereen. Als u hulp nodig hebt, aarzel dan niet om die te vragen.

Ryan Willegers / Havenmeester en CEO



GETTING HERE / NAVIGATION / FORMALITIES

CHARTS AC 2021, 2040, 2045; Imray C3, C15, Stanfords 11, 18

CO-ORDINATES 50°45'. 51N 01°32'.1W (Town Quay)

WAYPOINT 50°44'. 22N 01°30'.30W

TIDAL RANGE **Spring 3.4m; Neap 1.5m.** There is a double high water at springs which gives a stand of 3 hours. At neaps there is a stand of 2 hours. However, wind direction and force and barometric pressure can materially alter these conditions. Standard Port: Portsmouth.

ON APPROACH The first thing you see is the yacht race-starting platform with a distant backdrop of masts in Yacht Haven Marina. Leave the platform well to starboard. *'Jack in the Basket'*, a single red pile with a basket top-mark, marks the south west of the entrance. Access is available at all states of tide.

In the lower reaches of the river the margins of the fairway may have depths of less than 1.5m below CD at low water. At night the main channel beacons are lit green to starboard and red to port. Leading lights for entering the river are fixed red on 319°T. Please keep clear of the ferries.

NAVIGATION VIDEO If you are unfamiliar with Lymington Harbour and its approaches, check out our video, www.lymingtonharbour.uk/navigating-information, which shows how to navigate upstream, offering helpful guidance and highlighting the location of visitor berthing options and other points of interest.

IN SHORT REACH As the river bends to the right there are 2 red and white transit posts lit by fixed white directional lights to the west of the river at the south end, and 2 black and white posts similarly lit on the east side of the Reach at the north end. These are to assist the ferries to line up and pass each other in the river.

To the east/northeast of the *'Enticott'* starboard navigation beacon is a breakwater which is marked at night by a beacon displaying 2 fixed green lights vertically disposed. The extent of the breakwater is also marked by 14 yellow buoys mounted on vertical posts.

To the southwest of the *'Cocked Hat'* port beacon is a breakwater which is marked at night by a beacon displaying 2 fixed red lights vertically disposed. The extent of the breakwater is also marked by 8 yellow buoys mounted on vertical posts.

THE WAVE SCREENS Displaying a *"Welcome to Lymington"* notice marks the beginning of the inner harbour (**advisory speed limit 4 knots**).

THE SPEED LIMIT IS 6 KNOTS BELOW THE WAVE SCREEN.

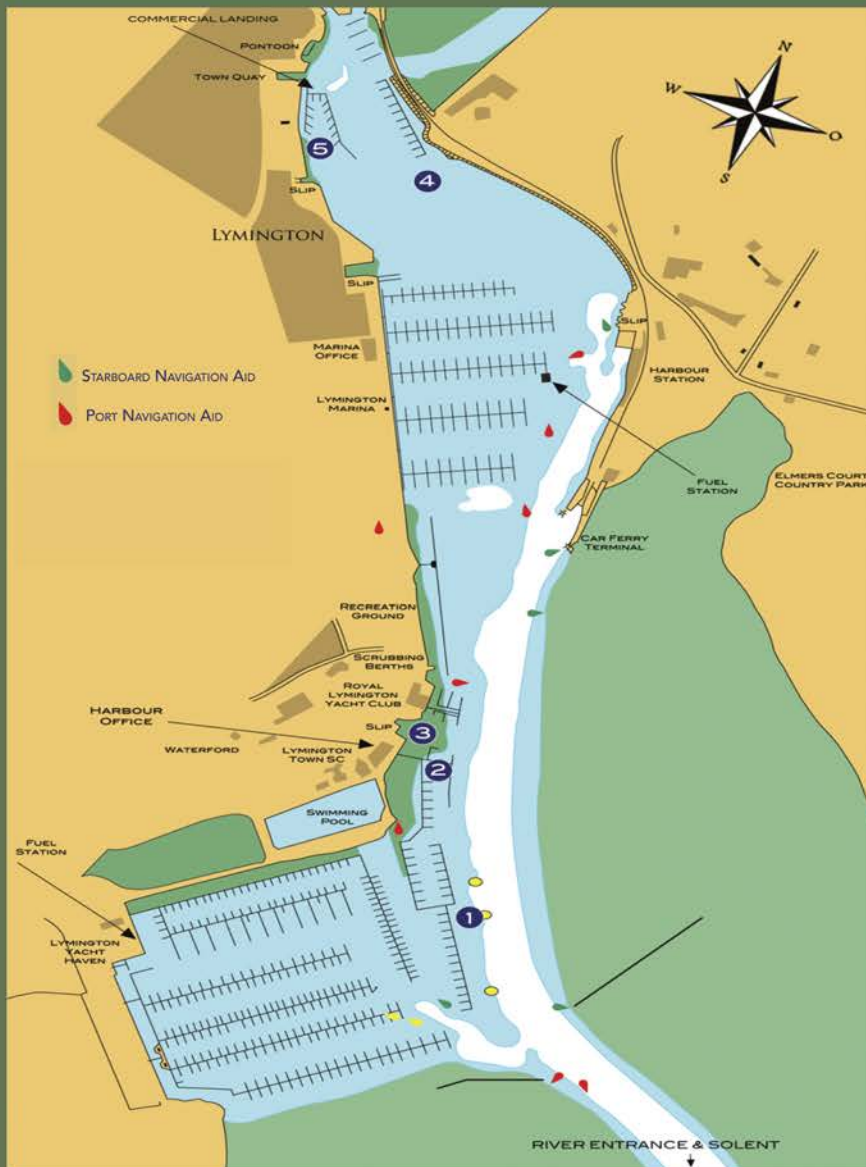
The adjacent map shows the location of Lymington Harbour Commission's visitor berths and public slipway and the Berthon and Lymington Yacht Haven marinas.

LYMINGTON HARBOUR COMMISSION FACILITIES

- 1 DAN BRAN VISITOR PONTOON
- 2 HARBOUR MASTER VISITOR PONTOON & LANDING
- 3 BATH ROAD PUBLIC SLIPWAY
- 4 TOWN QUAY VISITOR MOORINGS
- 5 TOWN QUAY VISITOR PONTOON

Before entering the harbour, visiting vessels should contact Lymington Harbour for berthing advice.

Call sign "Lymington Harbour"
on VHF Channel 66.



LET OUR FAMILY TAKE CARE OF YOURS.

Colten Care make the difficult care decisions easier, from sharing information and expertise in those early stages to the planning of individual care and admission into a home. With **3 homes in Lymington** we enable residents to live their best later life.

Your local family company, caring since 1980.

Call **01425 460985**
ColtenCare.co.uk



GETTING HERE / NAVIGATION / FORMALITIES

HOLD FAST!**SAILING PLEASURE CRAFT TO/FROM THE UK**

Pleasure craft reporting has **CHANGED**. If you are leaving or entering the UK on a pleasure boat of any kind, you are required to submit a pleasure craft report in advance.

Find out more about the new digital service at sPCR.homeoffice.gov.uk

Border Force have digitalised the pleasure craft reporting process, making it quicker and easier to report your journey in advance of travel to and from the UK.

If you own or are responsible for a pleasure craft that sails to or from the UK, you must provide information about:

- the vessel
- the voyage
- individuals on board
- good on board

Use the new online service, Submit a Pleasure Craft Report (sPCR), as a digital alternative to submitting a manual C1331.

**KEY FEATURES OF THE NEW SERVICE INCLUDE:**

- a fully digital, one-stop process that makes reporting easier and more agile
- editing functions that allow users to amend their journey details if their travel plans change
- creation of an online account that saves vessel, journey and passenger information for future use

LNTMs Sign up to our Local Notices to Mariners via our website
www.lymingtonharbour.co.uk





Boat insurance
made easy

Quotes in 20 seconds
Cover in 2 minutes
Low on-line premiums

Get the App -
craftinsure.com/app



> craftinsure.com ☎ 03452 607888

Authorised and regulated by the Financial Conduct Authority

SAFETY — FERRIES / SLIPWAY

BEWARE FERRIES!

Each year Wightlink Ferries make thousands of crossings to and from the Isle of Wight and it is therefore important that care is exercised by both the ferries and leisure users to ensure that incidents are avoided. To reduce the risk of incidents occurring between ferries and small craft, the following points should be noted:

- Ferries have powerful thruster units and feathering propellers may cause turbulence that can be hazardous for small craft — please keep clear at all times.
- If sailing, be aware that ferries are large vessels and will take your wind. Plan accordingly and be prepared.
- Be aware of the navigation constraints under which the ferries operate. When using the fairway, keep to the starboard side of the channel so you do not impede approaching craft.
- The sterns of the ferries swing outwards as they negotiate bends in the river. Keep well clear!

SLIPWAY

Our slipway at the Bath Road car park provides an ideal launching base from which to explore the Solent and the surrounding area. **The slipway can get busy at times and for the safety and enjoyment of everyone it is important that a few simple rules are followed:**



LAUNCHING OR RECOVERING

- Know where the end of the slipway is.
- Be aware of pedestrians and other slipway users.
- Tie up your boat securely.
- Remove your car, trailer or launching trolley correctly.

BEFORE LAUNCHING

- Check weather/tidal conditions.
- Do not block access. Rig your boat away from the slipway.
- Assess the risks such slips, trips and falls.
- Be aware of pedestrians and other slipway users.
- Attach a safety line to your trailer.
- Check any bungs are in place.
- Never stand behind a boat whilst it is being launched or recovered.
- Check the trailer and boat are safely secured.





The craftsmanship's ours,
the adventure's all yours!

Fully equipped boat yard in the Lymington Yacht Haven specialising in all aspects of top quality yacht refurbishment. As well as building new Contessa 32s we repair and refurbish all boats be they traditional or modern, power or sail.

Come and talk to our friendly and expert team
about your next project.

🌐 jeremyrogers.co.uk ☎ +44(0)1590 646780

✉ production@jeremyrogers.co.uk

SAFETY – GENERAL CODE OF CONDUCT FOR RECREATIONAL CRAFT

Formal regulation of the Harbour is through a set of rules – **GENERAL DIRECTIONS** – which stipulate how vessel Masters and operators must behave and act when within the harbour area. The Commissioners also have powers of Special Direction which are likely to be verbal instructions given by a harbour employee either on the water or on Commissioners' property. These must be adhered to.

However, by far the greatest part of the Harbour Authority's effort concerning regulation and discipline in the harbour is achieved through personal day to day contact between harbour users and staff, when information is exchanged and advice and education given.

For the harbour user who may not have visited Lymington Harbour before, or may never have been afloat before, it is important to understand some of the basic requirements of the Harbour Authority and best practice before setting off.

Please report any incidents or concerns to the Harbour Master's Office via
VHF Channel 66
Lymington Harbour
 or by calling **01590 672014**.
 In the event of an emergency outside of office hours call 999.

This short **Code of Conduct** sets out requirements and guidance.

DO NOT

- Do not exceed the 6 knot speed limit or create excessive wash.
- Do not water ski, use personal watercraft (such as jetski's), wind surf or kite surf.
- Do not allow pollutants or rubbish to enter the water.
- Do not dive in the harbour except with the permission of the Harbour Master.
- Do not moor/leave your boat unattended on the emergency landing located on the Harbour Master pontoon (marked with yellow hatching).

DO

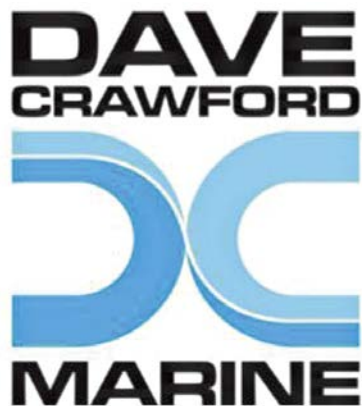
- Do comply with the International Rules for Preventing Collisions at Sea, Lymington Harbour General Directions & Special Directions given by the Harbour Master staff.
- Do comply with the 6 knot speed limit and keep your wash down. An advisory limit of 4 knots applies above the wave screens marking the entrance to the 'inner harbour'.
- Do keep a good lookout and act with due consideration to others.
- Do give way to all vessels over 20 metres in length & vessels constrained by draught i.e. ferries, dredging barges, large yachts.
- Do secure properly to your mooring or berth & use adequate fenders.
- Do report accidents to the Harbour Master.
- Do check Notices to Mariners before departure.
- Do check the weather forecast before you go on the water.
- Do wear life jackets or other personal flotation devices.





GETTING YOU BACK ON THE WATER.

EST. 1985

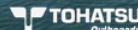


Sales – Parts – Repairs – Servicing

01590 671251

info@DaveCrawfordMarine.co.uk

Bridge Road, Lymington, Hampshire SO41 9BZ



SAFETY — ON THE WATER

**RNLI ADVICE ONBOARD**

Every year the lifeboats respond to an increasing number of incidents, many of which could have been prevented with simple safety precautions.

Make your boat as safe as possible by booking a free RNLI Advice Onboard Check.

WHAT IS ADVICE ONBOARD?

This free, friendly and confidential service looks at the safety aspects of your boat. Conducted by a highly trained volunteer, Advice Onboard is a personal, face-to-face safety advice service that takes place onboard your craft. Visits are tailored to your vessel and the type of boating you do and include:

- A free, independent discussion on boat safety equipment.
- An opportunity to discuss safety matters.
- A sticker showing your support for the scheme.
- A copy of the completed form.

The service is available in all parts of the UK to anyone who goes to sea in almost any type of leisure craft. For more information or to book visit www.rnli.org/safety/choose-your-activity/yacht-sailing-and-motorboating

WATER & PADDLING SPORT SAFETY

Thinking of going Kayaking? Canoeing? Kite Surfing? Stand Up Paddleboarding?

Heading out on the water is a great way to have fun and stay active. But, if you're not careful, it's a lot easier to get into trouble in the water than you might think. Conditions can change quickly and, if you're not prepared, you can easily get caught out. The RNLI are Sea Safety Experts and have created activity guides covering a whole range of watersports and hobbies, so you can prepare yourself properly for the challenges of your chosen activity. There's even advice for your dog!

Visit www.lymingtonharbour.co.uk/paddlesports-safety-guidance for safety guidance on watersports. Pamphlets are also available from the Lymington Harbour Office.

The Maritime and Coastguard Agency also urge kayak owners and other watersports enthusiasts to clearly label their property. Marking surfboards, kayaks, SUPs, inflatables, paddles and lifejackets with a name and/or phone number can help save invaluable time. Wearing a buoyancy aid and carrying a VHF radio and/or Personal Locator Beacon is also a good idea for more remote locations. And, remember, tell friends or family where you are going and when you expect to return so that they can contact the MCA if you do not come home as expected. Call 999 or 0203 817 2000 for the MCA.

Lymington RNLI's social media campaign: Pass the Pen #LabelYourKit, was created to help reach water users to ask for their support in marking their equipment with name, phone number and alternative contact number. Whilst emergency services will always launch to those in need, the RNLI says identification of property is key to resource management. Watersports labels can be ordered free online through the MCA. There are also labels available free from the RNLI Lymington Lifeboat Shop and the Lymington Harbour Office.





Boat Sales

Brokerage
Engines
New & Used
Trailers



Chandlery

Boat Maintenance
Boat Safety Equipment
Clothing & Lifestyle
Paint & Antifoul



Engineering

Electrical Service & Refit
GRP Repairs & Antifouling
Inboards & Outboards
Rigging



Fuel

E5 Petrol
Premium Diesel

QUICKSILVER® *River Boats* **TAKACAT**

ILMOR **MERCURY RACING** **MERCURY** **MERCURY** **SUZUKI** **YANMAR**
GO BOLDLY MerCruiser

AVON
MARINA

Rossiters Quay, Bridge Street, Christchurch, BH23 1DZ
info@avonmarina.com
01202 612 610 | info@avonmarina.com

HARBOUR FACILITIES

TOWN QUAY PONTOON – WALK ASHORE VISITOR BERTHS

Located adjacent to the picturesque quayside and just a 2 minute walk to the High Street, there are 46 deep water berths (including 26 finger berths). The majority of berths are available for advance booking with the remaining berths being available on a first come first served basis. All pontoon berths have power and water. Boats should not be left unattended for more than 24 hours unless agreed in advance.

DAN BRAN PONTOON – WALK ASHORE VISITOR BERTHS (ADVANCE BOOKING REQUIRED)

These bookable walk ashore berths are conveniently located for the Lymington Town Sailing Club and Royal Lymington Yacht Club, as well as the Mayflower Public House, and a short stroll from the centre of town. The 200m long pontoon is unique in the Solent as a walk ashore destination where rallies of up to 50 (10m) boats can be moored together thus making for a real party atmosphere. We can also accommodate motor yachts of up to 36.5m by special arrangement. All berths have power and water (subject to socket availability).

HARBOUR MASTER PONTOON – WALK ASHORE VISITOR BERTHS (ADVANCE BOOKING REQUIRED)

For RIBs and small boats (up to 8m) we have 6 walk ashore berths on the Harbour Master pontoon which is located next to the Bath Road slipway. Public parking is available. These moorings are conveniently located for the Mayflower Public House and are just a short stroll from the centre of town.



TOWN QUAY – FORE & AFT VISITOR MOORINGS

Located adjacent to the picturesque quayside and just a 2 minute walk to the High Street, there are 4 deep water fore and aft moorings identified by yellow buoys. Tender moorings are just a short row across to the designated area on the Town Quay pontoon.



Free Wi-Fi is available on all walk ashore visitor berths and on most of the Town Quay mid river visitor moorings.





WWW.SALMARINE.COM

SAL Marine Ltd, Mill Lane, Lymington, Hants, SO41 9AZ



HARBOUR FACILITIES

HARBOUR OFFICE The Harbour Office is open between 08.30 and 17.00 (7 days) between April and September and on weekdays between October and March. Our patrol staff are also on the water outside of these times. Our friendly team is here to help make your stay as enjoyable as possible. Feel free to flag us down on the water, visit the harbour office or call us on 01590 672 014 or VHF Ch66.

SHOWER & TOILETS Newly refurbished washroom & shower facilities are available on the Town Quay adjacent to the visitors' moorings. Use is included within the mooring fee. For visitors to the Dan Bran pontoon, use of Lymington Town Sailing Club's washroom & shower facilities is also included. A key code is required to gain access to the washroom facilities. This will be provided by harbour staff when collecting mooring fees.

SLIPWAY There is a slipway located adjacent to the Bath Road car park. A charge is made for launching. Please pay the harbour staff, if present on the slipway, or at the adjacent Harbour Office and refer to the article on [Slipway Safety](#) elsewhere in this guide.

LANDINGS There are public pontoons at the Town Quay and off the car park in Bath Road. The Harbour Master's pontoon (Bath Road) is for embarking and disembarking only and boats must not be left unattended.

SCRUBBING GRIDS Two scrubbing grids are available at the Town Quay and three are located adjacent (upstream) to the Royal Lymington Yacht Club. Reservations and payment must be made in advance through the Harbour Office.



Coral Star

01983 760212
coralstar.co.uk
Trips & Private Hire

Boat Trips, Isle of Wight, Boat Charters, Lymington, Yarmouth, The Needles
Private hire and Charters from Lymington, any day of the week.

Wedding blessings, renewing vows, ash scattering, hen & stag parties.
Pick-up from Yarmouth or Lymington.

Sun downer trips to the Needles, we have a small licenced bar on board.

TRIPS TO THE ISLE OF WIGHT & THE NEEDLES

3 April – 30 September

BOOKING ESSENTIAL

Ferry Service Every Day

Lymington – Yarmouth

10.00	09.15
12.00	10.45
15.30	14.30
17.00	16.15

£20 adult £15 child return
£15 adult £10 child single

Trips to see The Needles

Monday – *Wednesday* – Friday
Sunday

Leave Lymington – 12.00
Return Lymington – 15.15

Yarmouth Included

For more time on the Island catch a later
return boat £35 adult £20 child

All trips from Town Quay, Harbour Masters Pontoon by request

April to September 2023 – ALL TRIPS WEATHER PERMITTING

Please phone to avoid disappointment. Harbour Master pontoon, Bath Road SO41 3SE is better for parking.

Licensed by the Maritime and Coastguard Agency (MCA) to safely carry 62 passengers, but for passenger comfort we limit the passengers to about 40. If you have a large group please phone for details.

01983 760212 or 0777 2005567 • www.coralstar.co.uk • VALID 2023



HARBOUR FACILITIES

FUEL & WATER Water may be obtained on the two public landings, the Dan Bran pontoon and Town Quay pontoon. You must supply your own hose. Fuel and water are also available at both Berthon and Yacht Haven marinas.

CAR PARKING Public pay & display car parks at Town Quay and Bath Road are conveniently located for our visitor moorings.

LAUNDRY The Lymington Laundrette located just off the High Street (near Costa Coffee) offers a self-service laundrette. They also provide a service facility where they will do your washing and ironing and even offer a pickup/collection service!



Their address is:
11 New Street, Lymington
SO41 9BH
01590 672 898

Lymington Harbour Commissioners are committed to promoting environmental awareness and best practice so we can all continue to enjoy our boating in a clean and healthy environment. Please help us to achieve this by segregating and recycling your waste where possible.

See our Environment — Green Blue Boating Section for other guidance on environment.

GENERAL WASTE Should be bagged and placed in the skips located in a separate 'refuse' room within the toilet and shower block adjacent to the visitors' area at Town Quay. A key code to gain access will be provided by harbour staff when collecting mooring fees. In addition there are general waste receptacles adjacent to the footbridge accessing the Harbour Master and Dan Bran pontoons.

RECYCLING A glass recycling receptacle is provided within the refuse room at Town Quay. Glass and dry mixed recycling receptacles are located adjacent to the footbridge accessing the Harbour Master and Dan Bran pontoons.

SEWAGE Pump out facilities are available at the Lymington Yacht Haven (charge payable). Owners of vessels without storage tanks should use the free washroom and toilet facilities provided ashore as it is an offence to discharge sewage within harbour limits.



COMPETITION TIME — BE IN WITH A CHANCE TO WIN!

For 2023 we are offering a couple of prizes which you can stand a chance to win by participating in our satisfaction surveys...

For Full Terms & Conditions of the competitions and for links to the surveys,

please visit www.lymingtonharbour.co.uk

or scan the QR codes below

VISITOR COMPETITION

As a visitor to Lymington Harbour, we would love to understand more about your visit and hear your thoughts or feedback on how we can improve your experience!

By completing our Visitor Customer Satisfaction Survey you will automatically be entered into a draw to win 2 nights berthing on our Town Quay or Dan Bran Pontoons (subject to boat size and availability at the time of booking).

The draw will take place on 30th September 2023. The prize is valid for use up until 31st December 2024.



RESIDENT COMPETITION

As a resident mooring licence holder, long term visitor or a customer on the waiting list for a mooring, we would love to hear your thoughts or feedback on how we can improve your experience!

By completing our Customer Satisfaction Survey you will automatically be entered into a draw to win 2 nights visitor berthing at either Yarmouth, Cowes or Bembridge Harbours (subject to availability at the time of booking).

The draw will take place on 1st June 2023. The prize is valid for use up until 31st December 2023.



HARBOUR FACILITIES

If your waste was purchased outside the UK please **DO NOT** use the General Waste and Recycling bins.
Please call the Harbour Office (01590 672014) for help in disposing of your waste.

INTERNATIONAL CATERING WASTE (ICW)

Your food waste (and anything contaminated by the waste, for example a milk carton) is considered ICW if your vessel (except fishing vessels) has travelled from outside the territorial waters (12 nautical miles) of the UK, Channel Islands and Isle of Man, even if you stocked up for the entire journey in the UK, Channel Islands or Isle of Man.

In order to prevent outbreaks of notifiable diseases like foot and mouth disease you are required to dispose of this waste separately from domestic, general waste.

If you need to dispose of ICW please let the Harbour Office know. We will provide you with a bin bag which we would ask you to seal the ICW in. Please give the sealed bag to one of our River Staff who will take it to a separate container for specialist disposal or you may bring it to the Harbour Office by appointment.



Si vos déchets ont été
achetés en dehors du
Royaume-Uni, veuillez
NE PAS utiliser ces
poubelles.

Veuillez appeler la Capitainerie
(01590 672014) pour obtenir de
l'aide sur l'élimination de vos
déchets.



Als uw afval buiten
het VK is gekocht,
gebruik deze bakken
dan NIET.

Bel het Havenkantoor (01590
672014) voor hulp bij het
afvoeren van uw afval.



Wenn Ihr Abfall
außerhalb des
Vereinigten
Königreichs gekauft
wurde, verwenden Sie

diese Behälter bitte NICHT.

Bitte rufen Sie das Hafenamt
(01590 672014) an, um Hilfe bei
der Entsorgung Ihres Abfalls zu
erhalten.





As main dealers for Eberspacher, we are specialists in providing heating and air conditioning systems to suit all marine and special applications.

Marine distributor for sales, service and installation of:

- Ardic
- Battery chargers and inverters
- Calorifiers
- Dometic
- Eberspacher Kalori
- Isotherm fridges
- Kabola
- Wallas heaters
- Wallas cookers



Krueger Ltd, Unit 16 Queensway,
New Milton, Hampshire, BH25 5NN

☎ 01425 619869 🌐 www.krueger.co.uk

ARDIC



Eberspacher



Kalori

↔ DOMETIC



KABOLA

wallas

2023 HARBOUR DUES & CHARGES

FULL DETAILS OF ALL DUES AND CHARGES ARE AVAILABLE
FROM **THE HARBOUR OFFICE**
OR CAN BE FOUND ON OUR WEBSITE AT WWW.LYMINGTONHARBOUR.CO.UK

Long Term Visitors

Where resident mooring licence holders are not using their berths for a period of time opportunities arise for long term visitors. Long Term Visitor (LTV) mooring licences are granted on a monthly basis at rates that are lower than our standard visitor charges. If a mooring is available for longer, licences will be granted for the additional months up to the limits set out in the Terms & Conditions.

Commercial Harbour Dues & Passenger Dues

All vessels using the harbour, for whatever purpose, must pay harbour dues.

PLEASE NOTE:

Parking for vehicles & trailers in the Bath Road Slipway Car Park require separate payment via New Forest District Council's ticket machines.

**A vehicle & trailer require
2 tickets/spaces.**



Gary Saunders





NORDIA 66 CRUISER



VISMARA V62



BALTIC 61 CUSTOM



OCEAN EXPLORER 60



BLACK PEPPER CODE 2



NAJAD 490



WAUQUIEZ PILOT SALOON



X-YACHTS X-442



OYSTER 42



HALLBERG-RASSY 42F

A small selection of yachts successfully sold by Grabau International in 2022



EXCESS 12



ARCONA 400



RIVAL BOWMAN 40



NAJAD 380



HALLBERG-RASSY 37



RIVA 88 DOMINO SUPER



TRADER 64 SUNLINER



MARLOW 57E EXPLORER



GRAND BANKS 36 CLASSIC



BOTNIA TARGA 31 MKII

VISITOR OFFERS

In order to make your visitor stay on a Lymington Harbour mooring even better value, we have worked closely with select local partners to bring you a range of exclusive offers, from discounts on food and drink to local activities and experiences.

For full details of all our latest offers and the Terms & Conditions please visit www.lymingtonharbour.co.uk/visitor-offers or scan the QR Code to the right.



Aqua Yachts

Passion, Perfection, Performance

Polishing & Waxing • Antifouling • Stern Gear Refurbishment • Teak Cleaning,
Renovation & Restoration • Exterior & Interior Valeting • Anodes • Marine Electronics
• Plumbing Systems • Marine Engineering • Yacht Management • Sale & Purchase Support



Where we operate: Lymington, Christchurch, Poole, Beaulieu, Hythe, Southampton, Hamble
aquayachts.co.uk • info@aquayachts.co.uk • 07950928182



Studland Bay

Protecting our precious marine habitats together

- Recreational boaters who use, visit and enjoy Studland Bay are being asked to help protect its precious habitats for the future.
- After extensive consultation with the boating community and users of the bay, a voluntary no anchor zone was introduced in 2021 to help reduce damage caused by boats dropping and weighing anchors. This became a larger area in June 2022.
- The Marine Management Organisation is encouraging everyone to work together to protect Studland Bay Marine Conservation Zone. The site's seagrass beds are home to a protected species of seahorse and other wildlife, as well as forming important nursery grounds for fish stocks.
- For more information please see our website at www.gov.uk/mmo or scan the QR code below.



Pyatt & Pyatt

Chartered Certified Accountants

Family firm established in the New Forest since 1972

Whether your business or tax affairs are large or small we value your custom. We offer a range of services so why not give us a call to see how we can help you.

Accounts

Sole traders, Partnerships,
LLPs, Limited companies

Taxation

Self-Assessment, Partnership and
Corporation Tax Returns
Capital Gains Tax Calculations
VAT Returns via Making Tax Digital
PAYE services

Tailored business services

36 St Thomas Street Lymington Hampshire SO41 9NE

01590 624900

info@pyatt.co.uk www.pyatt.co.uk

THINGS TO SEE & DO

With so much to see and do in Lymington and the New Forest, you'll be spoilt for choice for days out. Whether looking for adventure, discovering some of the New Forest's history or exploring one of the many incredible gardens there is so much to choose from. Unwind with a coastal or forest walk or if you are feeling more energetic why not hire a bike. Below is a small selection of things to see and do.

Lymington Sea Water Baths

The **Sea Water Baths** are the oldest open air sea water baths in the UK. Established in 1833 the baths have historically gained national interest for their health giving waters and natural mud minerals and continue to be a popular day out for both tourists and locals. The various activities include inflatable obstacle courses, kayaking and paddle boarding. There is even a sand pit and paddling pool for tiny tots!

Cycling & Walking

Not only are there several routes in and around Lymington, the New Forest is on our doorstep. If you don't have your own bike there are several places you can rent one from and dozens of routes to explore in these ancient woodlands or along coastal paths. The area offers a diverse range of walking routes, whether it is coastal or in the forest. The sea wall is a popular choice and is perfect for bird watching.

New Forest Tour Bus

The **New Forest Tour Buses** run hourly everyday from end of July to middle September. The 3 routes pass many popular hot spots including the Ringwood Brewery, Longdown Activity Farm, New Forest Wildlife Park, Beaulieu Motor Museum, Exbury Gardens and Steam Railway.

Forest Fun

Frolic through bluebell woods, watch new born foals in the spring, dip your toes in the water of a forest stream or laze under the canopy of the mighty ancient oaks. Brilliantly coloured leaves and chance encounters with pannage pigs in the autumn to crisp, clear winter walks. The forest is great fun all year round! But please **DO NOT** feed or pet the animals!





Lymington

Charter Market



100 INDEPENDENT LOCAL TRADERS
Local Products & Artisans

- | | | |
|------------------|--------------------------|----------------------------------|
| ■ Fruit | ■ Cakes & Pastries | ■ Plants |
| ■ Vegetables | ■ Clothes | ■ Artwork |
| ■ Meat | ■ Ladies Accessories | ■ Toys & Games |
| ■ Fish | ■ Shoes | ■ Gifts |
| ■ Jewellery | ■ Cheese | ■ Tools |
| ■ Homeware Items | ■ Artisan Foods & Crafts | ■ Hot Food & Drinks To Take Away |
| ■ Bread & Pies | | |

And Much More...



The High Street, Lymington SO41 9AP
Don't forget to bring shopping bags!

**Every
Saturday
8am-4pm**

WEST SOLENT BOAT BUILDERS

SERVICE - REPAIRS - MAINTENANCE

RE-POWER - VALETING - TRAILERS

CHANDLERY - LIFTING - STORAGE

FULL LIFTING SERVICES UP TO 8 TONS

DEALER TRAINED ENGINEERS

COMPETITIVE RATES

THE BOATYARD, KEYHAVEN, LYMINGTON, SO41 0TR
01590 642080

WSBB@BTCONNECT.COM

WWW.WESTSOLENTBOATBUILDERS.COM



Welcome to Lymington Town Sailing Club

Bring your LHC mooring receipt and enjoy a warm welcome for the duration of your stay. We have excellent changing facilities, with a great bar and restaurant overlooking the Solent across to the IOW.

For more information including map and opening times contact us on 01590 674514
www.ltsc.co.uk/contact-us



**LYMINGTON TOWN
SAILING CLUB**

Bath House, Bath Road, Lymington, SO41 3SE

THINGS TO SEE & DO

Hurst Castle

Located within the New Forest National Park, **Hurst Castle** is situated on the seaward end of the shingle spit that extends 1.5 miles from Milford-on-Sea. Built by Henry VIII as a chain of fortresses to protect the Solent in 1544, this is the site where Charles I was imprisoned in 1648 before being taken to his trial and execution in London. A lovely day out by walking from Lymington via Keyhaven along the Solent Way before taking the small ferry from Keyhaven to the Castle.

New Forest Adventure Golf

New Forest Adventure Golf is an exciting new concept in mini golf. Although built with children in mind, it will also challenge the short game competitor. Other attractions include an 18 hole golf course and a tea garden offering pleasant treats like fresh strawberries and cream!

Woodside Park & Gardens

A beautiful area to relax, watch sports and let the kids run wild. This park has some breathtaking gardens, a terrific spot for picnics and has free sports facilities for its guests like the tennis courts, skatepark, table tennis and even outdoor gym equipment. The park is built for relaxation and many use it as a casual strolling area, there are many different events that take place here so you can never predict who or what could be here when you go.

Historic Town Tours

Lymington is a rare jewel steeped in history, mystery and skulduggery. Lymington Town Tours offers a range of interesting walks through the town and its history. Do you know where Donkey Cottage is? What is a crinkle crankle wall? Who was JH and why do his initials and the date 1773 appear in the Angel Hotel yard? All this and much more...

St Barbe Museum & Art Gallery

Located in the heart of the beautiful, historic coastal market town of Lymington, St Barbe is both a dynamic museum and highly regarded art gallery that appeals to locals and New Forest visitors. The museum explores the history of Lymington and the New Forest coast, inspired by local pride and supported by the local community, its collections and colourful, hands-on displays offer a fascinating insight into the area for all ages.

And Much More...

Lymington and the surrounding area offers so much in the way of entertainment and recreation. More information and contact details for these can be found on our website: www.lymingtonharbour.co.uk/things-to-see-and-do



OCEAN RIGGING

MARINE | INDUSTRIAL | ARCHITECTURAL

RIGGING SERVICES:

- Servicing & Replacement of Rigging
- Splicing & Rope Work
- Swaging
- Rig Checks & Reports
- Winch & Deck Gear Servicing & Supply
- Standing rigging - Wire & Rod
- Sheets, Halyards & all Running Rigging
- Dock lines, Mooring Warps and Anchor Chain
- Shackles, Blocks & Running Hardware
- Furling & Reefing Systems
- Masts, Booms, Poles in Aluminium & Carbon

INDUSTRIAL /

ARCHITECTURAL:

- Balustrades for stairs, balconies, decking and patios.

GAS SERVICES:

- Gas Safety Checks
- Gas Systems and Cookers



01590 676 292

Email: info@oceanrigging.co.uk | www.oceanrigging.co.uk

OCEAN RIGGING | Lymington Yacht Haven, Kings Saltern Road, Lymington SO41 3QD

My Marine Finisher

Specialising in Marine Restorations

High Quality Finish



- Polishing
- Grp Repair
- Varnishing
- Painting
- Teak Renovation
- Valeting
- Monthly Wash
- Vinyl Application
- And More...

Fully qualified Awl Grip Specialist, 25 years experience. Traditionally trained in all aspects of Marine finishing. Friendly helpful service.

Matthew Young – 07766 704659
mymarinefinisher@outlook.com
mymarinefinisher.co.uk



GETTING AROUND

By Road

The postcode for Satnav users is SO41 3SE.

By Rail

Lymington Town Railway Station, from where regular services connect to the main line at Brockenhurst, is just a few minutes walk from the Town Quay visitor moorings. From Brockenhurst there are regular fast direct trains to London Waterloo in the East and Weymouth in the West.

By Bus (Commuter Services)

Morebus operate buses from Lymington to Bournemouth (X1 & X2) and to Beaulieu and Hythe Ferry (112). Blue Star operate buses from Lymington to Southampton (6).

By Taxi

There are 2 established local firms; pre-booking is advised.
Lymington Taxis - 01590 688 888
Network Cars - 01590 677 777

Cycle

You can explore the wonderful scenery in the New Forest by hiring a bike and there are a few bike hire options in Lymington or take the 10 minute train ride to the village of Brockenhurst where you can start your ride in the New Forest. For more details & offers visit: www.lymingtonharbour.co.uk/Cycling

New Forest Open Top Bus Tour

The New Forest Tour has 3 connecting routes covering the whole of the National Park. From charming villages to rolling heathland and lush forest, each route takes in some of the many highlights of this magical landscape. These tours run from July to September. For more details & offers visit: www.lymingtonharbour.co.uk/local-attractions



The boat transport specialists for the UK and Europe



Based in Southampton and Bristol, we specialise in the transportation of 20'-50' boats.

Tel: 02380 845500
Mobile: 07831 486710
Email: info@boattransport.co.uk



BoatTransport.co.uk



Royal Lymington Yacht Club

The home of yachting, dinghy sailing and motor boating



Welcoming New Members Every Day

Whether your passion is powerboats, motor cruisers, yachts, dinghies or paddleboards, you'll find a warm welcome, excellent facilities, first class training, expert waterside services and a thriving social programme for all ages both ashore and afloat. Join us and enjoy:

-  Regular dinghy and keelboat racing
-  Sailing and motorboat cruises, rallies meets and socials
-  Junior and Youth sections offering coaching, racing and adventure
-  Excellent waterfront facilities
-  Exceptional training for power and sail for all ages and abilities
-  Popular restaurant and bar with sun terraces and great views
-  Extensive social programme and onshore activities throughout the year




Bath Road, Lymington, Hampshire. SO41 3SE
01590 672677 | sail@rlymyc.org.uk | @rlymyc
www.rlymyc.org.uk

EAT & SHOP

TIME TO EAT!


Lymington offers an outstanding assortment of dining experiences, from cream teas and café culture, to fine dining. There are eateries to take you through the whole day from breakfast to dinner and to suit any palate – several just a stone's throw from your mooring or a short stroll into town.



There are many coffee shops, some offer alfresco refreshments giving the area a continental feel. Soak up the atmosphere as you relax and watch the world go by!



As you would expect, there are plenty of pubs and restaurants offering a variety of delicious cuisines, many selling fresh local produce. Fish features highly on menus and with some of it landed right on the doorstep it could not be fresher.



Summer time boasts several foodie festivals such as the renowned Lymington Seafood Festival, the New Forest Show and Lymington Italia Festival - lots of delightful eats!

TIME TO SHOP!

The harbour is perfectly suited for all your shopping requirements. Just a short walk up the quaint cobbled street (Quay Hill), past independent boutiques, restaurants and pubs, brings you into the heart of town where you will find a Tesco Express, Poundland, M&S Foodhall as well as independent grocery shops.

Lymington offers an excellent shopping experience, attracting both national chains, such as Boots, Superdrug, White Stuff & WHSmith and a fabulous selection of boutiques and independent traders.



The most popular shopping attraction is the busy and vibrant weekly Saturday Charter Market, dating back to the 13th Century. The market boasts a range of stalls selling everything from local fine foods to craftwork and antiques.

For a comprehensive list of pubs and restaurants in Lymington, visit
www.lymingtonharbour.co.uk/eat-and-drink



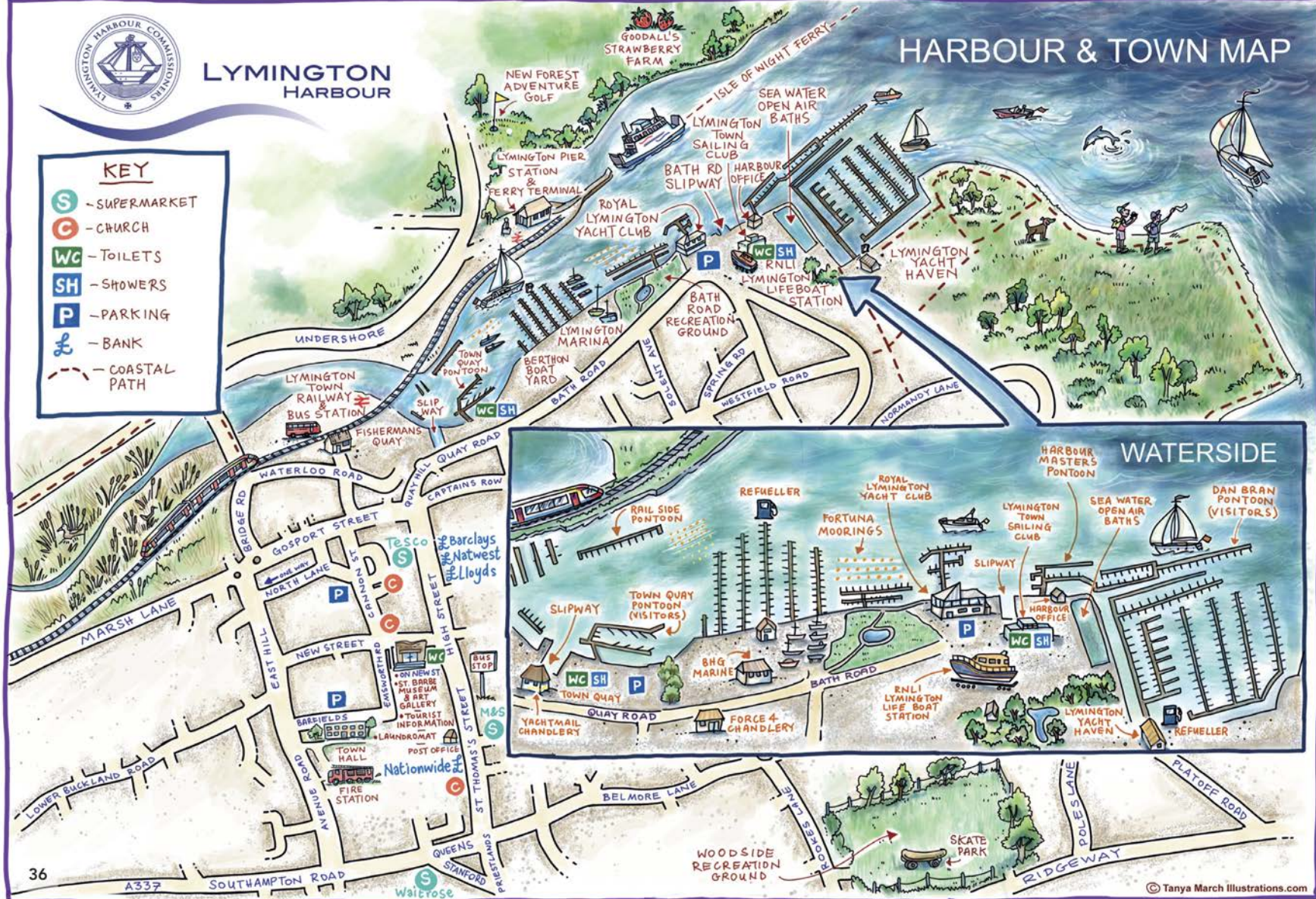


LYMINGTON HARBOUR

KEY

- S - SUPERMARKET
- G - CHURCH
- WC - TOILETS
- SH - SHOWERS
- P - PARKING
- £ - BANK
- COASTAL PATH

HARBOUR & TOWN MAP



HARBOUR & TOWN MAP

Lymington Harbour is a beautiful sheltered harbour at the gateway to the Western Solent. The Harbour welcomes over 20,000 visiting craft each year and has a wide range of visitor berths and amenities suitable for hosting yacht racing events, rallies and for catering to the needs of cruising sailors. The Harbour is easily accessible with deep water access to all visitor mooring areas.

There is a wide choice of berths and facilities ranging from private marinas (Berthon Lymington Marina and Lymington Yacht Haven) to Lymington Harbour Commissions' own walk ashore berths and moorings at Town Quay and the popular Dan Bran pontoon which is ideal for hosting visiting rallies – see the adjacent map.

Fuel is available at both of the private marinas and pump out facilities are available at Lymington Yacht Haven (charge payable).

A major draw to Lymington is the Saturday market which lines both sides of the Georgian High Street, the origins of which date back to the 13th century. Colourful stalls sell local produce, antiques, art, fashion and much more. Adjacent to the High Street are numerous courtyards full of shops, boutiques and a good selection of pubs, restaurants and cafes.

For more details on Visitor Offers, Things to See & Do, Getting Around, Eateries and Shopping see pages 27, 29, 31, 33 and 35 in this Guide and/or visit our website: www.lymingtonharbour.co.uk

Lymington has two popular yacht clubs, both of which have stunning views over the harbour and offer good food and a friendly atmosphere to visiting yachtsmen.

The Royal Lymington Yacht Club welcomes many visiting yachtsmen throughout the year and aims to encourage and promote yachting in all its aspects.

01590 672677
www.rlymyc.org.uk

Lymington Town Sailing Club looks over the famous Sea Water Baths and offers members and visitors opportunities to sail all year round.

01590 674514
www.ltsc.co.uk



Fuel Set™

Fuel Conditioner Concentrate

- **Removes water**
- **Prevents blocked filters**
- **Reduces harmful emissions**
- **Restores lost fuel economy**



***Ask at your local
chandlery
or contact us for
your nearest
stockist***

T: 01794 884963

www.liquideng.com

Water, water, everywhere

Condensation can accumulate as 'free water' in your fuel tank, even when it's fairly full. Water contamination is the root cause of rust and many other fuel and engine problems. It can also cause misfiring, black smoke, incomplete and inefficient burning, lost fuel economy and eventually clogged filters. Left untreated, poor performance, breakdowns and even engine damage can result. Removing water contamination with Fuel Set will prevent these problems, keep your fuel in tip-top condition and clean through your entire fuel system. Clean engines run smoothly, more efficiently and give better performance.

Don't delay...start looking after your fuel today!



 **Liquid Engineering**

ENVIRONMENT – GREEN BLUE BOATING



The Green Blue shares some of its best advice for lowering the impact of your boating in and around The Solent.

As boaters we have the luxury of gaining a unique view of the environment around us, we share the waters with local wildlife and often get to enjoy closer encounters with birds and mammals than we would on the shore. Therefore, it is crucial to the sustainability of our coast and waterways that when preparing to spend time on the water, during, and afterwards, that we aim to minimise our impact on the natural environment as much as possible.

MAINTENANCE

Even when you're not heading out on the water, the choices and purchases that you make during the maintenance months will affect the overall sustainability of your boating.

If you are looking to renew or refurbish equipment on-board, then you may want to consider the more sustainable products available. The Green Blue website, the joint environmental awareness programme between the Royal Yachting Association and British Marine, has a handy online green Business Directory. The businesses listed in the Directory are British Marine members that have been included as they have a service or product that has been designed to help the recreational boating sector minimise its environmental impacts.

There are also many simple tweaks that you can make to your maintenance processes that can improve your levels of best practice, such as collecting debris whilst removing anti-fouling, use non-toxic cleaning products, making use of hazardous waste bins, fitting a fuel collar when re-fuelling, and trimming your engine to improve efficiency. The Green Blue website: thegreenblue.org.uk is packed with practical and sustainable advice for boaters who are interested in both enjoying, and protecting, the environment around us.

The Lymington Harbour Office has printed resources to support the Green Blue initiatives for more environmentally friendly boating.
Feel free to pick up copies.



Sailing for a wilder Solent



Single-use plastic

Over time a single-use bottle can break up into over **10,000 pieces** of microplastic. Plastic contain **toxins** which can be passed on to the animals that eat them and, in turn, us. Reducing your impact can be easy: try to avoid single-use plastics where possible, invest in reusable alternatives, and be sure to recycle all waste on-board.

For more tips on sustainable boating visit:

hiwwt.org.uk/WilderSolent



**Hampshire &
Isle of Wight**

Wildlife Trust



ENVIRONMENT – GREEN BLUE BOATING

OUT & ABOUT

If you're planning a trip somewhere new, or maybe somewhere that you think you know, The Green Blue's Marina Environmental Facilities Directory can direct you to your nearest marina, harbour, or boatyard with recycling facilities, drinking water refill stations, bunded boat washdown systems and more. Planning your trip and thinking ahead isn't just good safety practice, but also good sustainability practice.

Slowing down your boat and keeping below speed restrictions will cause less disturbance to animals in the area and will also cause less wash and therefore less erosion to shorelines.

AT THE WATER'S EDGE

When returning to the shore it can be easy just to pick a close and convenient spot to land. Instead try to use designated landing places where available as this will lower the chances of damaging shoreline habitats, or disrupting nesting birds.

You can also do your bit to protect your local stretch of water from non-native invasive species by following the 'Check, Clean, Dry' procedure.

Check - for any plant or animal material on your boat, equipment, and clothing.

Clean - Wash any equipment that has come into contact with the water thoroughly with tap water.

Dry - Drain water from all equipment that can hold water and thoroughly dry before leaving a site.

For more tips and advice, or to access and download any of the resources mentioned above, visit: thegreenblue.org.uk.

You can also find The Green Blue on social media by following @TheGreenBlue on Facebook, Twitter, and @The_Green_Blue on Instagram, where you can learn more about sustainable recreational boating and will receive regular updates on their work.





**24/7 MARINE BREAKDOWN
SERVICE**

DON'T CAST OFF WITHOUT US

 **90% of boats are repaired on scene**

 **Dedicated marine engineers**

 **Home berth start**

 **Unlimited callouts**



JOIN TODAY: 0800 885500 www.seastart.co.uk
membership@seastart.co.uk

HARBOUR ADVISORY GROUP

Lymington Harbour is an independent Trust Port governed by a board of ten Commissioners with responsibility to manage, maintain and improve a harbour. Trust ports have no shareholders and all surpluses are reinvested in the harbour for the benefit of stakeholders, including harbour users and the local community. Trust ports are accountable to those stakeholders.

Government Guidance describes a Trust Port as ***"a valuable asset presently safeguarded by the existing board, whose duty it is to hand it on in the same or better condition to succeeding generations."***

Trust Ports must consult stakeholders on significant decisions related to the operation of the harbour. One of the ways Lymington Harbour Commissioners consult stakeholders is through the Lymington Harbour Advisory Group (LHAG), a body formed under Lymington Harbour Commissioners constitution to represent stakeholder views. This group comprises representatives of our key stakeholder groups, such as large businesses on the river, sailing clubs & mooring holders, local businesses, environmental groups and both Town and District Councils.

Currently the Group is made up of 13 representatives from key stakeholder organisations. The composition of the Group is reviewed periodically to ensure it properly represents the local community and interests which the Harbour serves. LHAG is currently comprised of representatives from the following stakeholder groups. Details of the representatives can be found on our website under Harbour Business.

Recreational Users	Members of Royal Lymington Yacht Club Lymington Town Sailing Club Lymington Sailability Lymington Amateur Rowing Club Sea Scouts Lymington & District Fishing Club
Commercial Boat Owners	West Wight Charter Skippers Association
Ferry Operators	Wightlink
Marinas	Lymington Yacht Haven & Berthon Boat Company
Local People	Lymington & Pennington Town Council & Lymington Society
Local Business	Lymington & District Chamber of Commerce
Environment	Lymington, Keyhaven & District Wildfowling Association Hampshire & Isle of Wight Wildlife Trust New Forest National Park Authority
Coast Protection	New Forest District Council
RNLI	Lymington Lifeboat Station

Meetings of the Group take place at least twice a year, and aims to provide an effective means of communication between the Harbour Authority and its harbour users and stakeholders. LHAG plays an active role and is especially encouraged to participate and contribute to consultations on the Harbour's Strategic Plan. The plan which is reviewed every five years sets out the Harbour's vision, plans and policies for the next five years.

To HAVE YOUR SAY contact the
Lymington Harbour Advisory Group
by emailing info@LHAG.co.uk



WHERE TO NEXT?

Where To Next?

The Solent is well known for being the ultimate playground for sailors and there are so many places to visit. Here are just a few examples:-

Yarmouth, Isle of Wight

The most westerly harbour on the Isle of Wight and our nearest neighbour, Yarmouth is a fantastic place to visit with lots to do including beautiful walks and great restaurants.

Cowes, Isle of Wight

An iconic yachting destination, Cowes history is steeped in yachting tradition with the bonus of great shopping and eateries. If you have the time, why not head to the Folly Inn about 2 miles further up the River Medina.

POSTCARD

*Thank you for visiting
Lymington!*

*We very much hope you enjoyed your
stay and will return soon.*

*We are always looking for ways to
make your stay more enjoyable
so please do take a
moment to complete our
Customer Satisfaction Survey!!!*



*Our Customer Satisfaction
Survey is available by
scanning the above QR code or
visit our website.
Thank you for your custom!*

Beaulieu Harbour

Just a short passage east lies Beaulieu River. If getting away from it all in beautiful surroundings is your thing, you won't be disappointed. There's plenty to see and do such as Buckler's Hard and the Maritime Museum and just over 2 miles up-river is the village of Beaulieu, home of the National Motor Museum, Palace House, Beaulieu Abbey and World of Top Gear!

Your One Stop Shop for... Aerial Photography & Drone Filming

Domestic, Commercial & Public Sector

Showcasing

- Asset
- Marina Promotion

Inspection

- Roof
- Utility Asset
- Wind Turbine

Mapping

- Project
- Heritage

Surveying

- Construction Process
- Insurance Damage Analysis
- Thermal Imaging

**Prices
starting
from £165**



Get in touch...
premiumhawk.com
07763 189329

Accredited
Drone Pilot



PREMIUM HAWK
DRONE HORIZONS. ABOVE & BEYOND

USEFUL CONTACTS

Maritime Information/Safety

Lymington Harbour Master	01590 672014
HM Coastguard	02392 552100
HM Customs National Yachtline	03001 232012
Lymington Lifeboat Station (RNLI)	01590 675894

Sailing Clubs

Lymington Town Sailing Club	01590 674514
Royal Lymington Yacht Club	01590 672677
Salterns Sailing Club	www.salternssailingclub.co.uk

Medical

Lymington Hospital / Minor Injuries Unit 8am - 9pm	01590 663000
Chemist / Boots at Waitrose	01590 678874
Chemist / Boots in the High Street	01590 673097
Doctors / Chawton House	01590 672953
Doctors / Wisteria Surgery	01590 672212
Dentists / Avenue House	01590 672100
Dentists / Smiles	01590 610210

Solent Harbour Offices

Beaulieu Harbour	01590 616200
Yarmouth Harbour	01983 760321
Cowes Harbour	01983 293952
Hamble Harbour / Hampshire County Council	01489 575387



YARMOUTH HARBOUR

Gateway to West Wight's Area of
Outstanding Natural Beauty

VISITOR BERTHS

Call VHF Ch68

Over 150+ visitor berths available daily!

Short stays | Overnights

Long-Term Visitors (Summer & Winter)

BBQ Area & Sandy Beach

Car & Cycle Hire | Yarmouth Pier

Water Lodge Accommodation

Sleep 6 | Roof Terrace | Patio | Sunset Views

BERTHING ASSISTANCE

On-water berthing assistance from our friendly
Berthing Masters to help you moor your boat

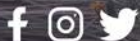
COCKPIT ESSENTIALS

In Harbour Office Reception

Drinks & Snacks | Souvenirs | Tourist Information
Maps & Guides | Travel Essentials | Gas & Fuel

Yarmouth Harbour, The Quay, Yarmouth, Isle of Wight, PO41 0NT
info@yarmouth-harbour.co.uk | +44 (0)1983 760321

yarmouth-harbour.co.uk



2022 PHOTOGRAPHY COMPETITION

We would like to thank all those who submitted entries to our competition. Here are a few of them. The 2022 winning photograph submitted by Roy Froud is featured on Page 4 of the Harbour Guide.



Mark Anderson



Mark Sparshott



Alan Mayell



Ted Pope



David Bathgate



Gary Saunders





Largest Yacht Brokerage in Europe
New Boat Sales | Used Boat Sales | Yacht Maintenance

McCONAGHY

CNB
yacht builders

BENETEAU

LAGOON

PRESTIGE

PROTECTOR
BOATS

BLUEGAME
A YACHT BY BERNARDINI

+44 (0)1590 673 212

ancasta.com/Lymington

2023 TIDE TABLES — LYMINGTON 1ST HW

Time Zone: UT (GMT)/BST

Lat 50°46' N

Long 1°32' W

JANUARY

Time	m	Time	m	Time	m
1 Su	0647 3.04 1210 1.39 1900 2.75	12 Th	0147 3.01 0714 1.22 1339 2.92 1926 0.94	23 M	0502 0.64 1122 3.40 1725 0.34
2 M	0029 1.30 0746 3.04 1312 1.33 2004 2.77	13 F	0229 2.90 0753 1.25 1424 2.80 2004 1.02	24 T	0007 3.39 0552 0.63 1210 3.40 1812 0.33
3 T	0129 1.30 0832 3.04 1405 1.22 2055 2.81	14 Sa	0318 2.82 0839 1.32 1517 2.70 2049 1.14	25 W	0056 3.40 0640 0.67 1300 3.32 1900 0.40
4 W	0220 1.27 0911 3.04 1450 1.11 2137 2.86	15 Su	0416 2.77 0932 1.40 1619 2.63 2145 1.27	26 Th	0150 3.32 0729 0.76 1352 3.17 1947 0.53
5 Th	0304 1.22 0944 3.04 1529 1.01 2215 2.92	16 M	0521 2.77 1036 1.46 1732 2.60 2255 1.36	27 F	0247 3.19 0819 0.89 1450 2.99 2036 0.73
6 F	0343 1.19 1018 3.07 1605 0.94 2253 2.99	17 T	0627 2.80 1149 1.42 1850 2.63	28 Sa	0347 3.05 0911 1.07 1552 2.82 2128 0.99
7 Sa	0420 1.18 1052 3.12 1640 0.90 2330 3.07	18 W	0010 1.34 0729 2.88 1300 1.28 1958 2.72	29 Su	0451 2.92 1008 1.28 1701 2.69 2228 1.27
8 Su	0455 1.19 1126 3.17 1713 0.88	19 Th	0121 1.22 0822 2.98 1403 1.05 2055 2.86	30 M	0600 2.84 1115 1.44 1821 2.63 2341 1.47
9 M	0005 3.13 0529 1.20 1157 3.18 1745 0.88	20 F	0223 1.04 0908 3.10 1458 0.80 2144 3.01	31 T	0708 2.82 1228 1.50 1941 2.65
10 T	0039 3.14 0603 1.21 1229 3.14 1817 0.89	21 Sa	0321 0.86 0952 3.23 1550 0.57 2231 3.18		
11 W	0111 3.10 0638 1.21 1301 3.05 1851 0.90	22 Su	0413 0.72 1036 3.34 1638 0.42 2318 3.31		

FEBRUARY

Time	m	Time	m	Time	m
1 W	0055 1.56 0807 2.83 1334 1.45 2043 2.72	12 Su	0233 2.84 0754 1.03 1437 2.76 2006 0.97	23 Th	0033 3.37 0620 0.41 1237 3.27 1839 0.24
2 Th	0157 1.52 0854 2.86 1428 1.31 2131 2.80	13 M	0324 2.79 0837 1.22 1536 2.70 2053 1.21	24 F	0120 3.27 0704 0.51 1326 3.13 1921 0.42
3 F	0249 1.40 0933 2.90 1512 1.13 2210 2.88	14 T	0427 2.76 0936 1.41 1648 2.64 2205 1.42	25 Sa	0209 3.11 0745 0.69 1417 2.95 2000 0.68
4 Sa	0331 1.26 1008 2.97 1551 0.96 2246 2.97	15 W	0541 2.76 1059 1.49 1820 2.63 2338 1.48	26 Su	0302 2.94 0826 0.93 1513 2.79 2042 1.01
5 Su	0407 1.13 1042 3.05 1625 0.83 2318 3.07	16 Th	0659 2.80 1229 1.38 1945 2.72	27 M	0358 2.80 0912 1.23 1615 2.66 2135 1.37
6 M	0441 1.03 1113 3.12 1658 0.74 2349 3.14	17 F	0106 1.34 0806 2.90 1345 1.10 2049 2.87	28 T	0503 2.69 1012 1.51 1735 2.59 2250 1.66
7 T	0513 0.97 1142 3.17 1729 0.69	18 Sa	0216 1.07 0857 3.02 1447 0.76 2138 3.04		
8 W	0016 3.15 0545 0.92 1209 3.14 1759 0.65	19 Su	0313 0.77 0943 3.15 1539 0.45 2223 3.20		
9 Th	0044 3.11 0617 0.88 1237 3.07 1829 0.64	20 M	0402 0.54 1026 3.27 1625 0.24 2304 3.33		
10 F	0112 3.02 0648 0.86 1310 2.95 1900 0.67	21 T	0449 0.41 1108 3.35 1710 0.14 2348 3.40		
11 Sa	0149 2.92 0720 0.90 1350 2.85 1930 0.77	22 W	0534 0.37 1151 3.35 1755 0.15		

MARCH

Time	m	Time	m	Time	m
1 W	0618 2.65 1135 1.67 1910 2.60	12 Su	0114 2.97 0650 0.72 1324 2.92 1902 0.73	23 Th	0513 0.25 1131 3.27 1732 0.18
2 Th	0021 1.77 0734 2.68 1258 1.63 2026 2.70	13 M	0155 2.90 0721 0.89 1412 2.85 1937 0.98	24 F	0004 3.31 0554 0.32 1214 3.21 1812 0.32
3 F	0136 1.69 0833 2.74 1403 1.45 2115 2.79	14 T	0247 2.85 0800 1.14 1511 2.79 2027 1.29	25 Sa	0047 3.20 0634 0.46 1259 3.09 1850 0.54
4 Sa	0230 1.48 0916 2.81 1452 1.20 2153 2.88	15 W	0350 2.81 0900 1.40 1629 2.73 2144 1.54	26 Su	0230 3.04 0810 0.66 1448 2.95 2026 0.82
5 Su	0313 1.24 0952 2.89 1530 0.95 2226 2.97	16 Th	0511 2.76 1031 1.53 1809 2.72 2328 1.59	27 M	0318 2.89 0844 0.93 1539 2.81 2103 1.17
6 M	0349 1.01 1024 2.98 1605 0.76 2256 3.06	17 F	0641 2.78 1213 1.42 1941 2.82	28 T	0407 2.76 0922 1.25 1638 2.71 2151 1.53
7 T	0421 0.85 1053 3.07 1635 0.63 2322 3.13	18 Sa	0100 1.39 0755 2.87 1334 1.11 2042 2.97	29 W	0504 2.66 1017 1.56 1754 2.64 2306 1.81
8 W	0452 0.74 1119 3.13 1706 0.56 2346 3.15	19 Su	0209 1.04 0848 2.98 1435 0.72 2128 3.12	30 Th	0620 2.59 1139 1.75 1929 2.65
9 Th	0523 0.68 1145 3.13 1736 0.53	20 M	0303 0.68 0931 3.10 1525 0.39 2207 3.24	31 F	0042 1.90 0747 2.60 1312 1.74 2048 2.73
10 F	0012 3.12 0553 0.64 1212 3.08 1806 0.53	21 T	0349 0.41 1010 3.21 1608 0.18 2245 3.33		
11 Sa	0039 3.05 0622 0.64 1244 3.00 1834 0.58	22 W	0431 0.27 1050 3.27 1649 0.12 2323 3.36		

Datum of Predictions = Chart Datum : 1.98 metres below Ordnance Datum (Newlyn)
Tides computed by the National Oceanography Centre





Marine Products for Maintenance, Repair and Overhaul

With over 12,000 stock lines from over
150 trusted brands

www.asap-supplies.com

**Free UK
& Ireland
Delivery**

on orders over
£120 (Inc VAT)



☎ 01502 716993

✉ info@asap-supplies.com

🌐 www.asap-supplies.com

📍 **Click & Collect** available at Hamble



2023 TIDE TABLES — LYMINGTON 1ST HW

Time Zone: UT (GMT)/BST

Lat 50°46' N

Long 1°32' W

APRIL

Time	m	Time	m	Time	m
1 Sa	0203 1.77 0858 2.65 1425 1.54 2142 2.82	12 W	0325 2.94 0845 1.14 1606 2.90 2122 1.41	23 Su	0116 3.14 0703 0.57 1338 3.06 1922 0.82
2 Su	0301 1.51 0947 2.73 1518 1.26 2222 2.90	13 Th	0432 2.87 0950 1.39 1731 2.86 2247 1.62	24 M	0156 3.03 0737 0.77 1424 2.98 1956 1.08
3 M	0345 1.21 1026 2.82 1559 0.98 2254 2.97	14 F	0556 2.81 1121 1.50 1909 2.89	25 T	0239 2.91 0809 1.02 1513 2.81 2033 1.65
4 T	0421 0.94 1058 2.91 1634 0.77 2323 3.05	15 Sa	0027 1.61 0727 2.82 1259 1.39 2031 2.99	26 W	0324 2.80 0845 1.29 1610 2.89 2120 1.37
5 W	0453 0.75 1127 3.01 1706 0.64 2349 3.12	16 Su	0153 1.37 0841 2.88 1418 1.09 2127 3.10	27 Th	0417 2.70 0936 1.54 1718 2.76 2229 1.86
6 Th	0524 0.64 1152 3.08 1738 0.58	17 M	0258 1.02 0934 2.97 1518 0.75 2211 3.20	28 F	0525 2.62 1047 1.71 1840 2.74 2356 1.90
7 F	0013 3.15 0555 0.59 1219 3.11 1809 0.57	18 T	0348 0.67 1016 3.05 1605 0.47 2246 3.26	29 Sa	0648 2.58 1215 1.71 1956 2.78
8 Sa	0038 3.15 0627 0.57 1249 3.10 1842 0.60	19 W	0431 0.43 1053 3.12 1646 0.31 2321 3.29	30 Su	0115 1.77 0805 2.60 1332 1.56 2054 2.83
9 Su	0109 3.11 0658 0.60 1324 3.06 1913 0.69	20 Th	0510 0.31 1131 3.17 1726 0.31 2357 3.29		
10 M	0145 3.05 0727 0.70 1407 3.00 1945 0.87	21 F	0548 0.32 1211 3.17 1806 0.41		
11 T	0231 3.00 0801 0.89 1500 2.95 2025 1.12	22 Sa	0036 3.23 0627 0.42 1253 3.13 1845 0.59		

MAY

Time	m	Time	m	Time	m
1 M	0218 1.52 0904 2.66 1432 1.31 2139 2.89	12 F	0424 2.96 0952 1.28 1732 3.04 2251 1.55	23 T	0129 3.04 0712 0.90 1407 3.03 1933 1.29
2 T	0306 1.23 0948 2.74 1517 1.07 2215 2.96	13 Sa	0544 2.89 1115 1.36 1858 3.06	24 W	0208 2.97 0745 1.07 1454 2.99 2012 1.47
3 W	0344 0.97 1024 2.83 1555 0.88 2245 3.03	14 Su	0017 1.51 0708 2.86 1241 1.29 2011 3.12	25 Th	0251 2.88 0821 1.24 1545 2.93 2057 1.63
4 Th	0418 0.78 1055 2.93 1630 0.76 2313 3.11	15 M	0135 1.32 0822 2.89 1354 1.09 2107 3.18	26 F	0339 2.78 0907 1.40 1642 2.87 2155 1.73
5 F	0453 0.67 1125 3.02 1706 0.72 2340 3.16	16 T	0238 1.04 0916 2.93 1453 0.86 2150 3.22	27 Sa	0437 2.68 1005 1.52 1747 2.82 2305 1.76
6 Sa	0527 0.63 1156 3.09 1742 0.73	17 W	0326 0.78 1001 2.98 1540 0.68 2226 3.23	28 Su	0547 2.60 1115 1.55 1855 2.80
7 Su	0010 3.19 0603 0.62 1231 3.12 1819 0.78	18 Th	0409 0.59 1039 3.02 1622 0.61 2300 3.21	29 M	0016 1.67 0701 2.57 1227 1.49 1957 2.82
8 M	0045 3.18 0638 0.66 1311 3.12 1858 0.88	19 F	0447 0.51 1116 3.05 1702 0.64 2334 3.19	30 T	0121 1.50 0808 2.60 1331 1.35 2049 2.86
9 T	0126 3.15 0715 0.75 1400 3.11 1938 1.03	20 Sa	0524 0.53 1157 3.07 1742 0.76	31 W	0214 1.28 0902 2.66 1424 1.19 2130 2.92
10 W	0216 3.10 0754 0.90 1500 3.08 2027 1.23	21 Su	0011 3.15 0602 0.62 1239 3.07 1821 0.92		
11 Th	0314 3.03 0846 1.10 1610 3.05 2130 1.43	22 M	0050 3.10 0638 0.75 1323 3.06 1857 1.11		

JUNE

Time	m	Time	m	Time	m
1 Th	0259 1.08 0946 2.75 1509 1.05 2206 3.00	12 M	0643 2.87 1212 1.17 1943 3.15	23 F	0223 2.96 0802 1.08 1514 3.01 2033 1.43
2 F	0339 0.91 1023 2.86 1552 0.95 2238 3.08	13 T	0106 1.27 0755 2.85 1323 1.14 2042 3.15	24 Sa	0305 2.85 0841 1.15 1600 2.93 2119 1.47
3 Sa	0420 0.79 1100 2.97 1634 0.89 2312 3.16	14 W	0208 1.13 0857 2.86 1424 1.06 2128 3.15	25 Su	0354 2.73 0927 1.23 1653 2.85 2213 1.49
4 Su	0500 0.71 1138 3.07 1719 0.88 2348 3.22	15 Th	0300 0.97 0946 2.89 1516 0.99 2207 3.13	26 M	0451 2.63 1020 1.31 1752 2.80 2312 1.50
5 M	0543 0.67 1220 3.15 1804 0.91	16 F	0345 0.84 1028 2.92 1600 0.96 2241 3.10	27 T	0556 2.57 1120 1.36 1854 2.78
6 T	0028 3.25 0625 0.68 1306 3.20 1849 0.97	17 Sa	0427 0.77 1109 2.95 1643 0.98 2317 3.08	28 W	0014 1.46 0706 2.56 1224 1.37 1952 2.81
7 W	0114 3.25 0709 0.72 1359 3.23 1938 1.05	18 Su	0505 0.76 1149 3.00 1724 1.05 2353 3.08	29 Th	0115 1.37 0812 2.60 1327 1.33 2044 2.87
8 Th	0206 3.20 0754 0.80 1459 3.22 2031 1.16	19 M	0542 0.79 1232 3.04 1802 1.14	30 F	0211 1.23 0908 2.69 1425 1.23 2128 2.95
9 F	0305 3.13 0848 0.91 1607 3.20 2132 1.27	20 T	0031 3.08 0618 0.85 1313 3.08 1839 1.24		
10 Sa	0412 3.03 0949 1.04 1719 3.17 2240 1.35	21 W	0108 3.07 0652 0.93 1353 3.10 1915 1.32		
11 Su	0527 2.94 1059 1.13 1833 3.15 2355 1.35	22 Th	0144 3.03 0726 1.00 1434 3.07 1953 1.38		

Datum of Predictions = Chart Datum : 1.98 metres below Ordnance Datum (Newlyn)
Tides computed by the National Oceanography Centre



A PARTNER YOU CAN TRUST



AUTHORIZED
VOLVO PENTA SERVICE

ropewalk
MARINE
www.ropewalkmarine.com
01590 677073

2023 TIDE TABLES — LYMINGTON 1ST HW

Time Zone: UT (GMT)/BST

JULY

Time	m	Time	m	Time	m
1 Sa	0303 1.06 0957 2.80 1519 1.12 2209 3.04	12 W	0027 1.26 0725 2.77 1245 1.25 2010 3.03	23 Su	0231 2.90 0814 0.88 1516 2.95 2043 1.15
2 Su	0352 0.89 1041 2.93 1612 1.01 2248 3.13	13 Th	0134 1.27 0836 2.77 1353 1.32 2105 3.02	24 M	0311 2.78 0849 0.96 1559 2.85 2123 1.21
3 M O	0440 0.74 1125 3.06 1702 0.92 2331 3.23	14 F	0233 1.21 0935 2.81 1453 1.32 2149 3.00	25 T D	0401 2.68 0929 1.10 1651 2.79 2209 1.32
4 T	0527 0.63 1212 3.19 1752 0.87	15 Sa	0325 1.11 1023 2.86 1545 1.27 2228 2.99	26 W	0459 2.61 1017 1.27 1750 2.76 2306 1.42
5 W	0014 3.30 0614 0.56 1300 3.29 1842 0.86	16 Su	0410 1.00 1105 2.91 1630 1.22 2304 2.99	27 Th	0606 2.57 1120 1.42 1855 2.77
6 Th	0102 3.32 0701 0.54 1351 3.34 1932 0.88	17 M ●	0450 0.91 1145 2.97 1711 1.19 2341 3.02	28 F	0014 1.46 0724 2.59 1235 1.48 2000 2.81
7 F	0153 3.28 0749 0.56 1447 3.34 2024 0.92	18 T	0527 0.86 1223 3.05 1748 1.17	29 Sa	0127 1.38 0838 2.66 1352 1.41 2057 2.89
8 Sa	0249 3.19 0840 0.64 1546 3.28 2119 0.99	19 W	0016 3.07 0601 0.84 1259 3.12 1823 1.17	30 Su	0234 1.19 0938 2.79 1459 1.23 2147 2.99
9 Su	0351 3.07 0935 0.76 1651 3.20 2218 1.09	20 Th	0049 3.10 0634 0.84 1332 3.15 1857 1.16	31 M	0332 0.93 1028 2.94 1558 1.02 2232 3.11
10 M C	0458 2.94 1033 0.93 1759 3.12 2321 1.19	21 F	0121 3.08 0707 0.84 1405 3.12 1932 1.15		
11 T	0610 2.83 1137 1.11 1907 3.06	22 Sa	0154 3.01 0740 0.85 1438 3.05 2007 1.14		

AUGUST

Time	m	Time	m	Time	m
1 T O	0425 0.68 1114 3.11 1651 0.82 2315 3.23	12 Sa	0207 1.46 0926 2.79 1438 1.59 2133 2.89	23 W	0317 2.75 0845 1.02 1556 2.82 2116 1.21
2 W	0514 0.48 1158 3.27 1740 0.69 2359 3.33	13 Su	0307 1.34 1018 2.87 1534 1.48 2216 2.91	24 Th D	0411 2.68 0928 1.28 1653 2.79 2208 1.42
3 Th	0601 0.35 1243 3.39 1829 0.61	14 M	0356 1.17 1058 2.94 1620 1.33 2252 2.94	25 F	0520 2.64 1031 1.53 1803 2.77 2324 1.56
4 F	0045 3.36 0648 0.30 1329 3.43 1918 0.60	15 T	0436 0.98 1132 3.01 1658 1.17 2326 3.00	26 Sa	0649 2.63 1203 1.64 1922 2.79
5 Sa	0133 3.33 0736 0.32 1420 3.39 2006 0.63	16 W ●	0511 0.84 1205 3.09 1731 1.06 2357 3.07	27 Su	0055 1.51 0821 2.72 1336 1.54 2035 2.86
6 Su	0225 3.21 0823 0.42 1515 3.28 2056 0.73	17 Th	0542 0.75 1235 3.16 1802 0.98	28 M	0215 1.26 0927 2.87 1449 1.27 2130 2.98
7 M	0321 3.06 0910 0.60 1613 3.15 2146 0.89	18 F	0027 3.12 0614 0.70 1303 3.19 1835 0.93	29 T	0319 0.92 1016 3.04 1549 0.95 2216 3.11
8 T C	0424 2.90 1000 0.86 1717 3.02 2240 1.11	19 Sa	0055 3.12 0645 0.68 1329 3.16 1906 0.89	30 W	0412 0.58 1059 3.21 1639 0.66 2259 3.24
9 W	0533 2.78 1057 1.17 1824 2.93 2342 1.32	20 Su	0124 3.05 0715 0.68 1357 3.08 1936 0.88	31 Th	0459 0.32 1139 3.36 1725 0.46 2340 3.34
10 Th	0650 2.71 1206 1.45 1934 2.88	21 M	0155 2.95 0744 0.72 1430 2.97 2006 0.91		
11 F	0055 1.46 0815 2.72 1326 1.60 2040 2.87	22 T	0232 2.84 0814 0.83 1509 2.88 2038 1.02		

Lat 50°46' N

Long 1°32' W

SEPTEMBER

Time	m	Time	m	Time	m
1 F	0543 0.17 1218 3.45 1811 0.37	12 T	0336 1.27 1038 3.00 1602 1.35 2233 2.91	23 Sa	0455 2.75 1010 1.68 1726 2.81 2254 1.61
2 Sa	0022 3.38 0628 0.15 1301 3.46 1857 0.37	13 W	0416 1.02 1108 3.06 1638 1.11 2305 2.99	24 Su	0635 2.75 1152 1.77 1858 2.81
3 Su	0107 3.33 0714 0.22 1347 3.39 1942 0.45	14 Th	0448 0.82 1138 3.14 1709 0.93 2334 3.07	25 M ●	0036 1.56 0810 2.86 1329 1.60 2018 2.88
4 M	0156 3.21 0757 0.38 1437 3.25 2026 0.60	15 F	0519 0.70 1204 3.20 1738 0.82	26 T	0202 1.28 0914 3.02 1442 1.26 2116 2.99
5 T	0249 3.05 0840 0.63 1531 3.08 2108 0.84	16 Sa	0001 3.13 0548 0.64 1228 3.23 1808 0.76	27 W	0306 0.89 1000 3.17 1538 0.87 2200 3.12
6 W	0349 2.89 0923 0.98 1630 2.93 2154 1.14	17 Su C	0027 3.14 0619 0.64 1251 3.20 1839 0.74	28 Th	0356 0.53 1038 3.32 1624 0.55 2239 3.23
7 Th	0455 2.76 1016 1.36 1734 2.82 2254 1.45	18 M	0053 3.09 0648 0.66 1318 3.13 1908 0.75	29 F	0440 0.27 1114 3.42 1706 0.35 2318 3.32
8 F	0617 2.69 1130 1.69 1850 2.76	19 T	0123 3.01 0715 0.73 1349 3.04 1934 0.82	30 Sa	0522 0.16 1150 3.48 1749 0.28 2358 3.34
9 Sa	0014 1.65 0753 2.73 1302 1.85 2010 2.76	20 W	0159 2.92 0742 0.88 1426 2.96 2002 0.97		
10 Su	0138 1.66 0909 2.83 1422 1.79 2112 2.81	21 Th	0244 2.85 0813 1.11 1512 2.91 2037 1.20		
11 M	0244 1.51 1000 2.93 1519 1.60 2157 2.86	22 F	0340 2.79 0858 1.41 1610 2.86 2132 1.45		

Datum of Predictions = Chart Datum : 1.98metres below Ordnance Datum (Newlyn)
Tides computed by the National Oceanography Centre





Quality Assured!

- Boat painting and varnishing
- Bespoke fabrication
- Marine engineering
- Accident/insurance repairs
- Osmosis treatment systems
- Teak/synthetic decks laid/restored
- Engine repower centre
- Bow thrusters fitted
- Project management

Friendly staff, expert advice,
professionally trained
skilled workforce
Seasonal Special Offers!



dickinson



wallas

Raymarine
...world leaders in marine electronics.



victron energy
BLUE POWER

PROUD MEMBER OF
BRITISH MARINE
LEADING THE INDUSTRY



Visit our website for the latest news and offers! www.bucklers.co.uk

Bucklers Hard Boat Builders Ltd • Located in Bucklers Hard and Hythe Marinas
Phone (01590) 616214 Email: info@bucklers.co.uk

2023 TIDE TABLES — LYMINGTON 1ST HW

Time Zone: UT (GMT)/BST

Lat 50°46' N

Long 1°32' W

OCTOBER

Time	m	Time	m	Time	m
1 Su	0605 0.20 1230 3.45 1832 0.32	12 Th	0344 1.09 1036 3.09 1609 1.09 2236 2.95	23 M	0628 2.92 1147 1.77 1838 2.86
2 M	0042 3.30 0648 0.34 1314 3.36 1913 0.45	13 F	0417 0.88 1103 3.15 1640 0.88 2306 3.03	24 T	0019 1.50 0754 3.02 1318 1.58 1958 2.91
3 T	0129 3.19 0729 0.56 1400 3.21 1953 0.65	14 Sa	0448 0.75 1129 3.21 1709 0.77 2333 3.10	25 W	0143 1.24 0855 3.16 1428 1.24 2058 3.00
4 W	0222 3.05 0809 0.86 1448 3.05 2031 0.92	15 Su	0519 0.71 1154 3.25 1740 0.72	26 Th	0245 0.90 0940 3.28 1521 0.87 2142 3.10
5 Th	0317 2.92 0848 1.21 1542 2.91 2113 1.24	16 M	0000 3.14 0550 0.73 1218 3.25 1812 0.72	27 F	0335 0.59 1016 3.37 1605 0.57 2221 3.18
6 F	0422 2.81 0939 1.59 1641 2.78 2208 1.55	17 T	0028 3.13 0621 0.78 1245 3.21 1841 0.76	28 Sa	0419 0.40 1050 3.42 1645 0.40 2259 3.24
7 Sa	0542 2.75 1055 1.89 1756 2.71 2328 1.77	18 W	0100 3.08 0651 0.88 1317 3.15 1910 0.84	29 Su	0359 0.35 1026 3.44 1625 0.36 2239 3.26
8 Su	0717 2.78 1231 2.01 1924 2.70	19 Th	0138 3.03 0722 1.04 1357 3.08 1941 1.00	30 M	0441 0.44 1103 3.40 1707 0.44 2322 3.23
9 M	0057 1.78 0834 2.88 1352 1.90 2035 2.74	20 F	0227 2.97 0758 1.27 1445 3.02 2020 1.21	31 T	0522 0.61 1145 3.32 1746 0.58
10 T	0209 1.62 0926 2.96 1450 1.66 2126 2.80	21 Sa	0328 2.92 0850 1.53 1546 2.95 2119 1.44		
11 W	0303 1.36 1003 3.03 1534 1.36 2205 2.87	22 Su	0450 2.89 1008 1.74 1706 2.88 2242 1.57		

NOVEMBER


Time	m	Time	m	Time	m
1 W	0011 3.17 0602 0.86 1229 3.20 1824 0.79	12 Su	0313 0.91 0955 3.18 1538 0.84 2207 3.04	23 Th	0015 1.19 0732 3.21 1303 1.23 1937 2.96
2 Th	0100 3.08 0640 1.13 1313 3.07 1900 1.03	13 M	0348 0.88 1022 3.24 1612 0.80 2238 3.10	24 F	0119 0.98 0819 3.28 1357 0.96 2027 3.02
3 F	0154 2.99 0720 1.43 1400 2.95 1939 1.29	14 T	0423 0.89 1050 3.27 1647 0.79 2310 3.14	25 Sa	0211 0.79 0857 3.32 1443 0.73 2108 3.08
4 Sa	0253 2.90 0809 1.72 1454 2.83 2028 1.55	15 W	0500 0.95 1121 3.28 1721 0.81 2347 3.15	26 Su	0255 0.67 0932 3.33 1524 0.59 2147 3.12
5 Su	0403 2.85 0916 1.94 1559 2.72 2137 1.73	16 Th	0535 1.03 1157 3.25 1755 0.87	27 M	0338 0.66 1007 3.33 1605 0.57 2229 3.15
6 M	0524 2.84 1040 2.01 1720 2.67 2259 1.76	17 F	0030 3.13 0613 1.16 1240 3.20 1832 0.98	28 T	0420 0.75 1046 3.30 1646 0.62 2314 3.16
7 T	0638 2.88 1201 1.91 1839 2.67	18 Sa	0124 3.10 0657 1.32 1333 3.13 1918 1.13	29 W	0501 0.91 1125 3.26 1725 0.74
8 W	0016 1.64 0737 2.93 1305 1.68 1940 2.72	19 Su	0228 3.07 0754 1.50 1436 3.05 2017 1.27	30 Th	0000 3.15 0541 1.10 1206 3.19 1801 0.89
9 Th	0114 1.43 0821 2.99 1353 1.41 2027 2.78	20 M	0345 3.05 0907 1.62 1550 2.97 2133 1.37		
10 F	0201 1.20 0857 3.05 1431 1.15 2104 2.87	21 T	0510 3.07 1033 1.63 1713 2.91 2257 1.34		
11 Sa	0239 1.02 0928 3.12 1505 0.96 2137 2.95	22 W	0629 3.13 1154 1.49 1833 2.92		

DECEMBER

Time	m	Time	m	Time	m
1 F	0046 3.12 0619 1.30 1247 3.11 1835 1.05	12 T	0319 1.04 0956 3.18 1547 0.88 2222 3.04	23 Sa	0047 1.13 0758 3.16 1331 1.12 2015 2.90
2 Sa	0135 3.07 0658 1.48 1329 3.01 1913 1.22	13 W	0401 1.01 1031 3.25 1627 0.81 2301 3.13	24 Su	0146 1.06 0842 3.18 1423 0.96 2103 2.94
3 Su	0224 3.00 0742 1.65 1415 2.90 1955 1.38	14 Th	0443 1.01 1107 3.31 1707 0.78 2343 3.20	25 M	0238 1.00 0921 3.18 1508 0.84 2146 2.99
4 M	0320 2.92 0835 1.77 1508 2.77 2049 1.50	15 F	0526 1.04 1146 3.33 1747 0.77	26 T	0323 0.98 0957 3.17 1551 0.77 2229 3.04
5 T	0423 2.86 0940 1.82 1613 2.67 2153 1.57	16 Sa	0029 3.24 0611 1.09 1232 3.30 1829 0.80	27 W	0407 1.00 1035 3.17 1631 0.76 2311 3.09
6 W	0530 2.83 1052 1.78 1727 2.61 2305 1.55	17 Su	0121 3.24 0658 1.16 1324 3.23 1917 0.86	28 Th	0448 1.07 1114 3.18 1708 0.80 2355 3.13
7 Th	0634 2.84 1200 1.65 1840 2.61	18 M	0221 3.21 0753 1.24 1423 3.13 2013 0.96	29 F	0526 1.16 1151 3.17 1743 0.86
8 F	0010 1.46 0729 2.88 1257 1.47 1940 2.66	19 T	0328 3.17 0855 1.33 1531 3.02 2115 1.06	30 Sa	0035 3.15 0601 1.25 1228 3.14 1816 0.93
9 Sa	0107 1.34 0814 2.94 1346 1.28 2028 2.74	20 W	0442 3.13 1007 1.38 1647 2.92 2226 1.14	31 Su	0114 3.12 0637 1.32 1304 3.06 1850 1.00
10 Su	0154 1.21 0851 3.01 1427 1.11 2109 2.83	21 Th	0557 3.12 1121 1.36 1803 2.86 2339 1.16		
11 M	0237 1.11 0925 3.10 1507 0.98 2146 2.94	22 F	0703 3.14 1230 1.26 1916 2.86		

Datum of Predictions = Chart Datum : 1.98metres below Ordnance Datum (Newlyn)
Tides computed by the National Oceanography Centre





COOKS MARITIME CRAFTSMEN & YACHT SURVEYS

Boat Builder/Shipwright

**Fully Qualified and Insured
Pre-purchased Surveys and
Insurance Surveys**

A wide range of repairs and re-fits
carried out and craft maintained,
from internal joinery, GRP, and
timber repairs to boat washing,
antifouling and painting.

**07952 955906
01590 675521**

cooksmcraftsmen@gmail.com

www.cooksmaritimesurveys.com

Lymington Yacht Haven



Celebrating our 75th anniversary 1947 – 2022

**Specialising in sports cruisers, day boats,
fishing boats, yacht tenders, dinghies,
RIBs and safety boats.**

Yamaha outboard engine sales, parts and service.

**Jeanneau powerboats – Linder aluminium boats
– Rigiflex safety boats – AB RIBs – Zodiac Tenders
– Brokerage**



**The Shipyard, Bath Road, Lymington,
SO41 3YL | 01590 613600**

sales@bhg-marine.co.uk | www.bhg-marine.co.uk

BRING YOUR BOAT HOME TO THE BEAULIEU RIVER



Discover your perfect berth today

beaulieuriver.co.uk

01590 616200

THE
BRITISH
YACHTING
AWARDS 2022
WINNER



BEAULIEU RIVER
BUCKLER'S HARD YACHT HARBOUR

GREENHAM
REGIS
marine electronics

A Wärtsilä company

lymington@greenham-regis.com
www.greenham-regis.com
01590 671144

GARMIN.



READY TO TACK INTO TOTAL INTEGRATION?

JOIN THE CLUB

GPSMAP® PLUS SERIES. ADVANCED SAILING. ULTIMATE INTEGRATION.

7, 9" OR 12" TOUCHSCREEN
CHARTPLOTTERS

BUILT-IN GARMIN
SAILASSIST™ FEATURES

SUPPORTS BLUECHART® G3 OR G3 VISION CHARTS WITH
NAVIONICS® DATA AND AUTO GUIDANCE¹

J1939 ENGINE
INTEGRATION

ONEHELM™ THIRD-PARTY
DEVICE CONNECTIVITY

©2022 Garmin Ltd. or its subsidiaries. ¹Auto Guidance is for planning purposes only and does not replace safe navigation operations. Wi-Fi is a registered trademark of the Wi-Fi Alliance.